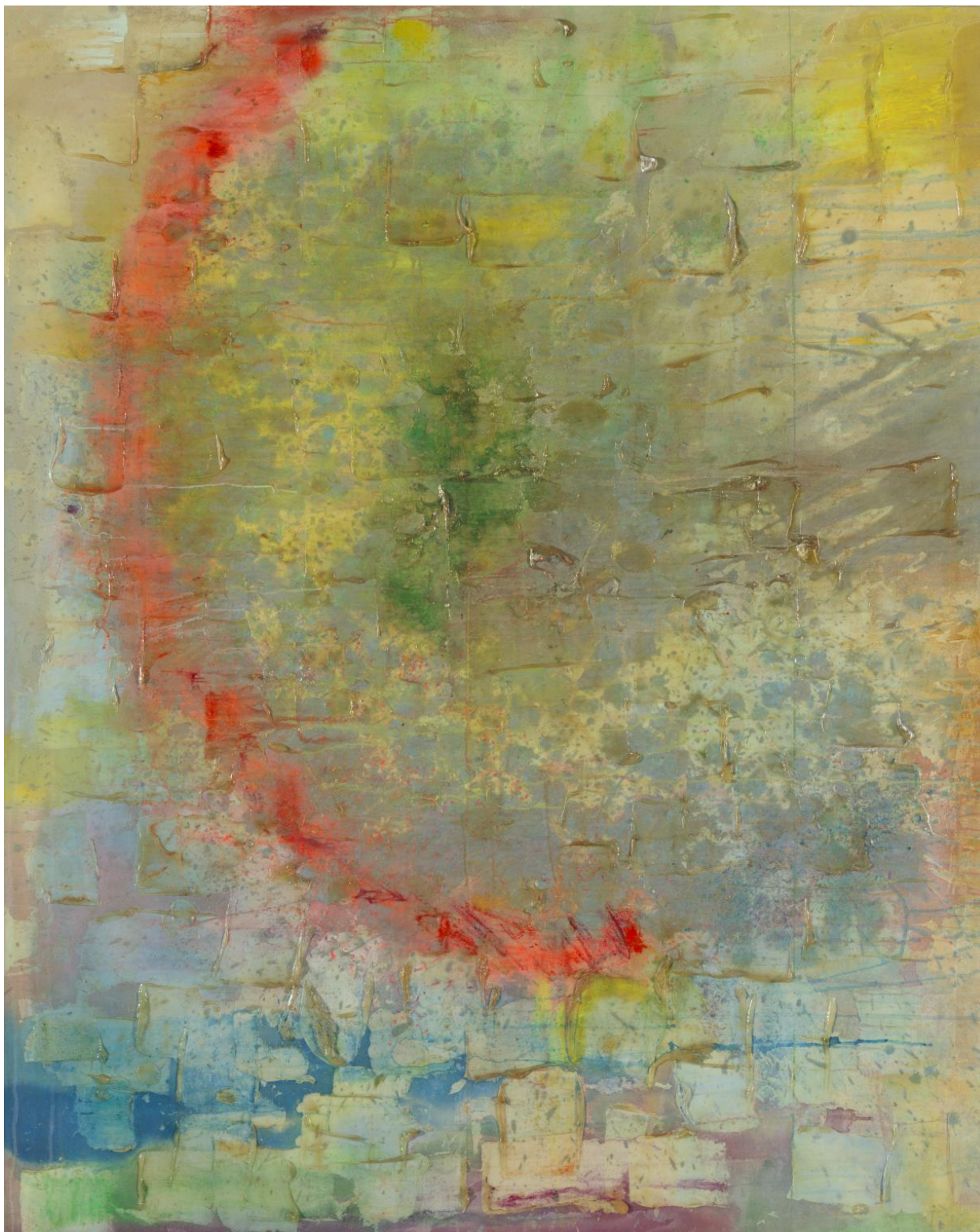


Sacha Jason Guyana Dreams – Frank Bowling (1989; Tate)

<https://www.tate.org.uk/art/artworks/bowling-sacha-jason-guyana-dreams-t12134>



Registered charity no.1048092

www.magiclanternart.org.uk

- What shapes can you see in this painting? **Squares, rectangles, a semi-circle.**
- And what colours can you see? **Red, yellow, blue, green, purple, pink, grey, brown.** Do these colours make you feel warm or cold? **The way that the artist has used these colours here makes them look warm.**
- If you could run your hand down this painting (if you are ever in an art gallery DON'T do this as it can damage the painting due to the grease that's on our hands!) would it feel smooth or bumpy? **Even though it is a painting and not a sculpture it would actually feel bumpy and rough.** Why would it feel bumpy? **The artist has used very thick paint that sticks out of the painting, even when it is dry. The art name for using thick paint is "impasto".**
- Put your hands in front of you and show how big you think the painting is. **It's big! 1780mm high x 1360mm wide. That's similar to a tall human.** All artists make choices about every aspect of their work. This one had a choice about what size to make it. Why do you think he chose to make it big? **It stands out and grabs our attention.** How would it be different if it were smaller? **We would have to go close up to it and would not see so much of the paint details.**
- Do you think that this painting is meant to be something in particular or is it an abstract artwork – one where the artist has not meant to it to be anything at all? **In fact it is something almost in between the two. It is not meant to look like anything in particular but the artist came up with the shapes and colours when he visited a particular place. Instead of showing us what the place looked like he painted the feelings the place gave him when he was there.**
- Is there anything in the painting that reminds you of a place or real things? **Perhaps the yellow in the top righthand corner is the sun. Or maybe the red semi-circle is the sun or sunset or its reflection in water. The blue could be water and the green could be something from nature like trees.**
- The paint has a blurry effect rather than being sharp and in focus. What could that tell us about the light where the painting is set? **The blurriness could indicate the haziness of the sun that affects the way everything else is seen.**
- What feelings do you think he experienced that made him choose these colours and shapes? What does it make YOU feel?
- **The artist, Frank Bowling, painted this after visiting the country he was born in, Guyana in South America, with his son, Sacha, who was born in the UK. Sacha looked through the hazy light towards the sea and said it reminded him of his father's paintings.**



A map of South America showing the location of Guyana



Registered charity no.1048092
www.magiclanternart.org.uk



Artsmark
Partner

Supporting cultural education, endorsed by Arts Council England

Follow on ideas

- Close your eyes and think of a place that you really like visiting. It could be somewhere you go to a lot like a park or somewhere you have been to on holiday. What colours and shapes come into your head when you think of this place? Using as thick paints as possible paint these colours and shapes to show how this place makes you feel.
- Write a letter to a friend or family member from the place you have chosen telling them three things you love about that place.
- Guyana is in the continent of South America but is considered part of the Caribbean region. Do some research to find out why this is.

Topic links

- Colours
- Shapes
- Journeys
- Abstract Art